



MATCH PANEL™

CERTIFIED GREEN PRODUCT



Environmentally Friendly Panel



MATCH PANEL™

CERTIFIED GREEN PRODUCT



Introducing the New MATCH PANEL from Series Supplies — Green-Certified and Cost-Saving Innovation

Advantages of the New MATCH PANEL

- Direct Wall Installation – Can be mounted directly onto existing walls without the need for plywood backing, reducing material and labour costs.
- Extended Panel Size – Comes in a larger size of **1000mm (W) x 2700mm (L) x 8mm (T)**, providing a seamless look with fewer joining lines compared to standard laminates.
- Green Singapore Certified – Environmentally friendly and sustainable product choice.
- Acoustic Performance – Offers sound absorption properties that enhance comfort in interior spaces.
- Zero Formaldehyde Emission – Safe for indoor use with no harmful chemical release.
- Low TVOC Emission – Ensures healthier indoor air quality.
- Moisture Resistant – Designed to withstand humidity, ideal for tropical climates.
- Thermal Resistant – Maintains dimensional stability under temperature changes.
- Termite-Free – Built to resist termite damage for long-lasting durability.
- Design compatibility - MATCH PANEL can be joined continuously with Series Supplies' Fluted Collection 1 & 3

The MATCH PANEL combines sustainability, practicality, and superior performance, making it a smart and eco-friendly choice for modern interior projects.

www.seriessupplies.com



MATCH PANEL™

CERTIFIED GREEN PRODUCT



Introducing the New MATCH PANEL from Series Supplies — Green-Certified and Cost-Saving Innovation

The MATCH PANEL combines sustainability, practicality, and superior performance, making it a smart and eco-friendly choice for modern interior projects.

- Series Supplies proudly presents the new MATCH PANEL, a next-generation wall panel solution certified under the Green Singapore initiative. Designed for both sustainability and practicality, this panel redefines interior wall applications with its smart installation and efficient performance.
- Unlike traditional laminate systems that require plywood backing, the MATCH PANEL can be mounted directly onto existing walls, reducing material usage, labour time, and overall project cost. This makes it an ideal choice for designers and contractors seeking a more efficient and eco-friendly alternative.
- Another key advantage is its extended size of 1000mm (W) x 2700mm (L) x 8mm (T). With this longer length, MATCH PANEL eliminates unsightly joining lines commonly seen with standard laminates (typically only 2400mm long). This creates a seamless, elegant finish—perfect for HDBs, condominiums, and modern interiors that value clean aesthetics and sustainability.
- The new MATCH PANEL from Series Supplies is where eco-conscious design meets cost-effective innovation—a smarter, greener way to elevate any interior space.

www.seriesupplies.com



MATCH PANEL™

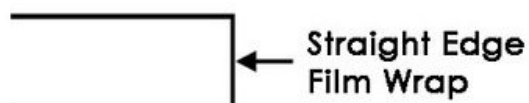
CERTIFIED GREEN PRODUCT

CLASSICS matches various model of our Fluted Panel & PVC Foamboard Grille Panel

W1000mm X H2700mm X T8mm



Straight-Edge



FM-064S pearl white



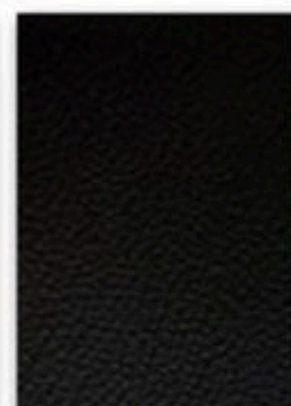
FM-066S warm grey



FM-042S cool grey



FM-073S deep grey



FM-065S matte black



FM-01S oak



FM-02S walnut



FM-05S



FM-09S



FM-21S



FM-11S



FM-12S



FM-14S



FM-30S



FM-278S



FM-914S



FM-31S gold



FM-086S bronze



FM-087S gun



FM-079S concrete



MATCH PANEL™

W1000mm X H2700mm X T8mm

Bare-Edge



← Bare Edge



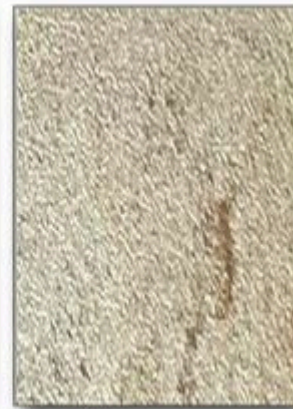
FM-1063



FM-1411



FM-1401



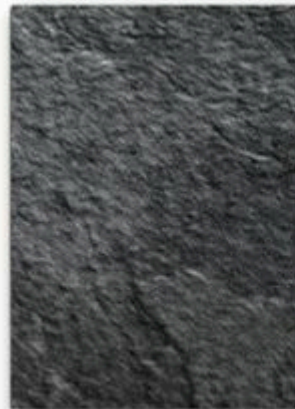
FM-1431



FM-1609



FM-1163



FM-1421



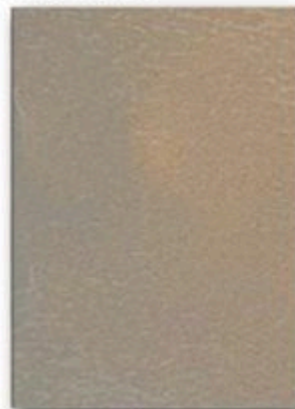
FM-1404



FM-1441



FM-1629



FM-1410



FM-1500



FM-1512



FM-1704



FM-1705

R3-Edge



← Rounded Edge
Film Wrap



FM-1774R



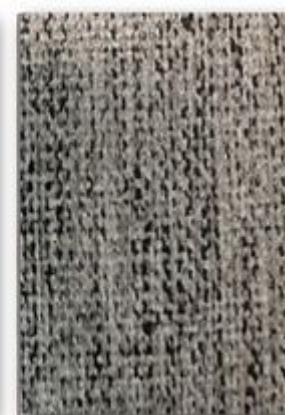
FM-1775R



FM-1776R



FM-1770R



FM-1771R



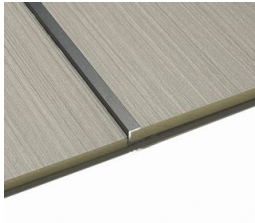
MATCH PANEL™

CERTIFIED GREEN PRODUCT

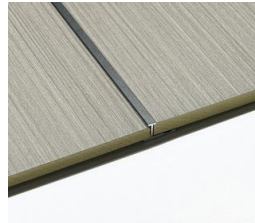
Introducing the MATCH PANEL Trimming System – Sleek Finishing with Black Aluminium Profiles



C-trim profile



T-trim profile



U-trim profile



Each aluminium profile comes in a length of 3000mm, allowing for flexible installation across various wall heights and design layouts. The matte black finish adds a refined contrast that highlights the panel design while maintaining a modern, cohesive look.

- **C Trim Profile** – For neat side or end finishing, providing a smooth edge detail.
- **T Trim Profile** – Ideal for joining two panels seamlessly in the same plane.
- **U Trim Profile** – Perfect for panel framing or edge protection applications.

Match Panel joint/connecting options

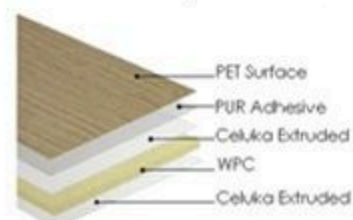


Characteristics:

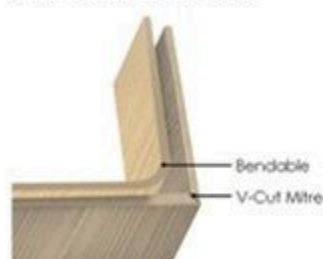
ZERO formaldehyde emission
LOW TVOC emission
moisture resistant
thermal resistant

Physical & Mechanical Properties:

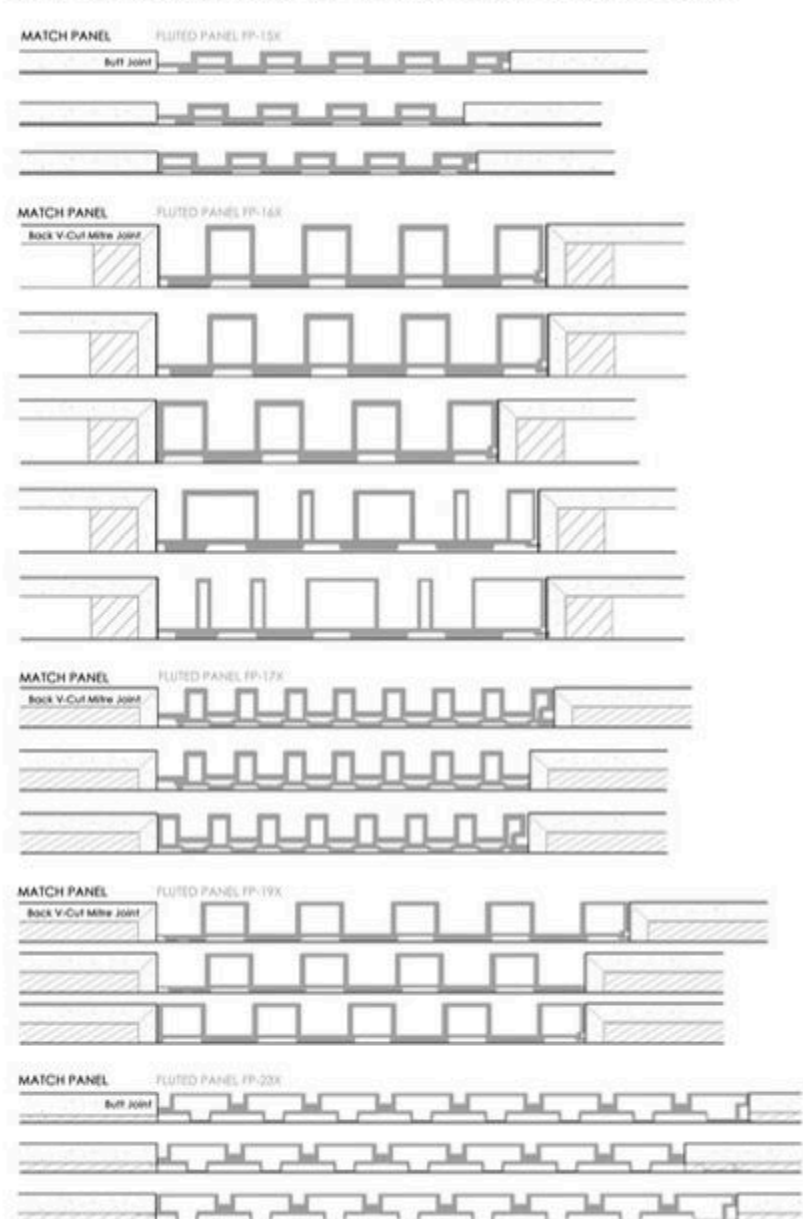
hardness: 71 HRR
modulus of rupture: 30 MPa
bending modulus: 2383 MPa
moisture content: 0.6%
water absorption expansion rate: 0.04%
resistance to screw withdrawal (surface): 1505N
resistance to screw withdrawal (side): 1398N
Board density deviation: -0.1 %



Bending Options



Fluted and Match Panel joint/connecting options





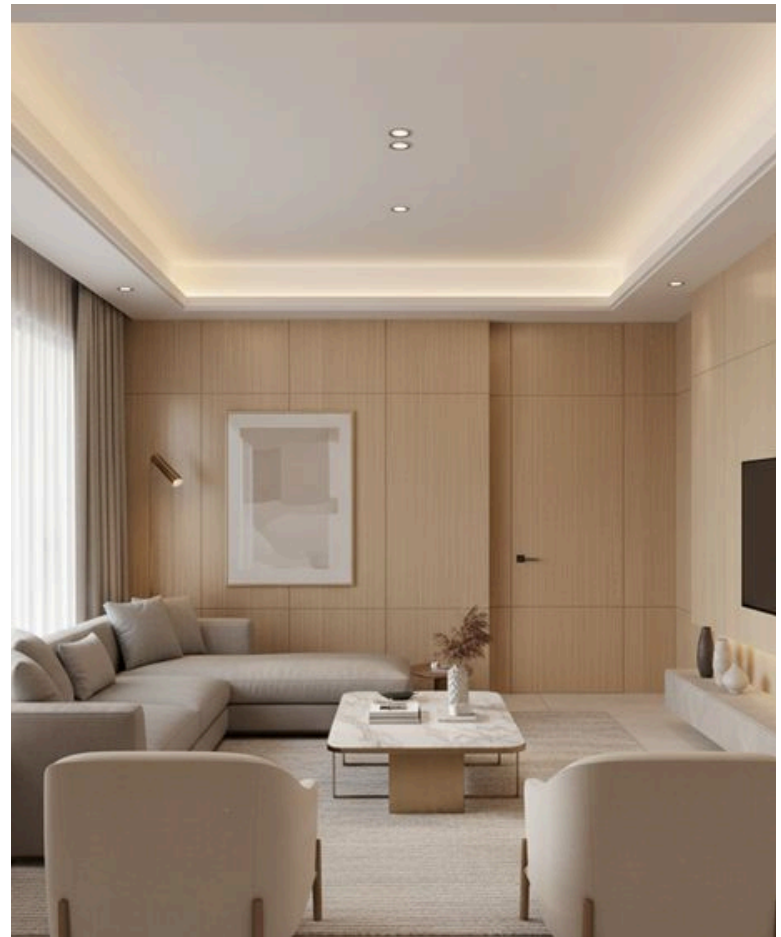
MATCH PANEL™

CERTIFIED GREEN PRODUCT

RESIDENTIAL APPLICATION



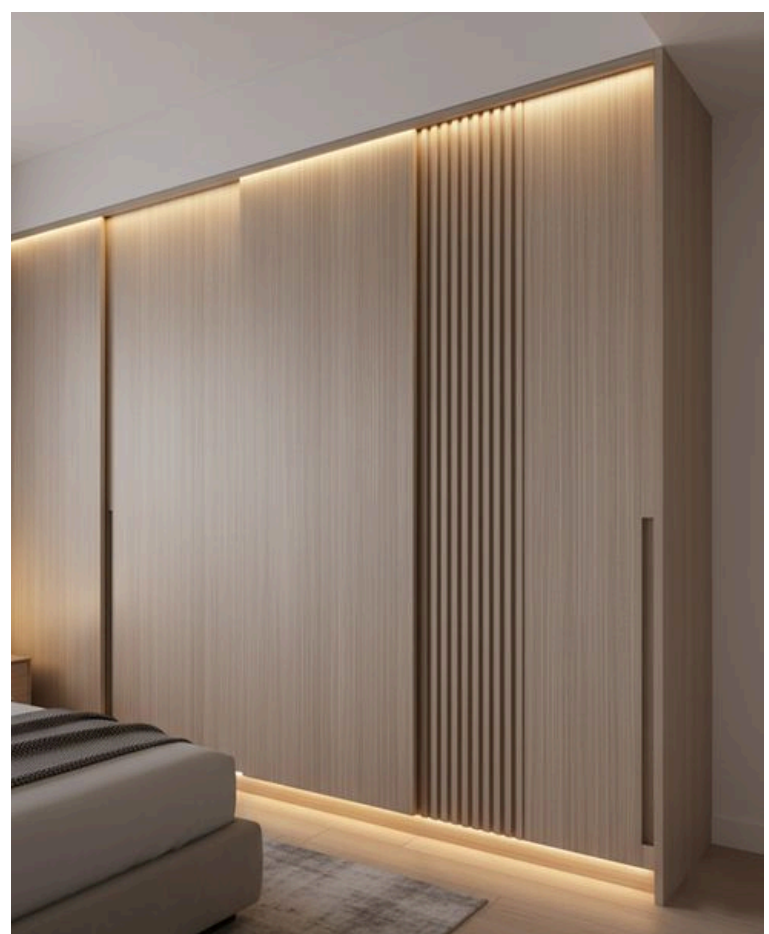
TV Feature Wall



Wall Panelling



Shoes Cabinet Door



Wardrobe Door

MATCH PANEL is a versatile solution for modern homes, offering a sleek and seamless look across various interior elements. It creates an elegant TV feature wall, delivers a premium finish for shoes cabinet doors and wardrobe doors, and enhances any space through stylish wall panelling. With its lightweight design, extended size, and refined aesthetic, MATCH PANEL brings a contemporary, durable, and cohesive finish to residential interiors.



MATCH PANEL™

CERTIFIED GREEN PRODUCT

COMMERCIAL APPLICATION



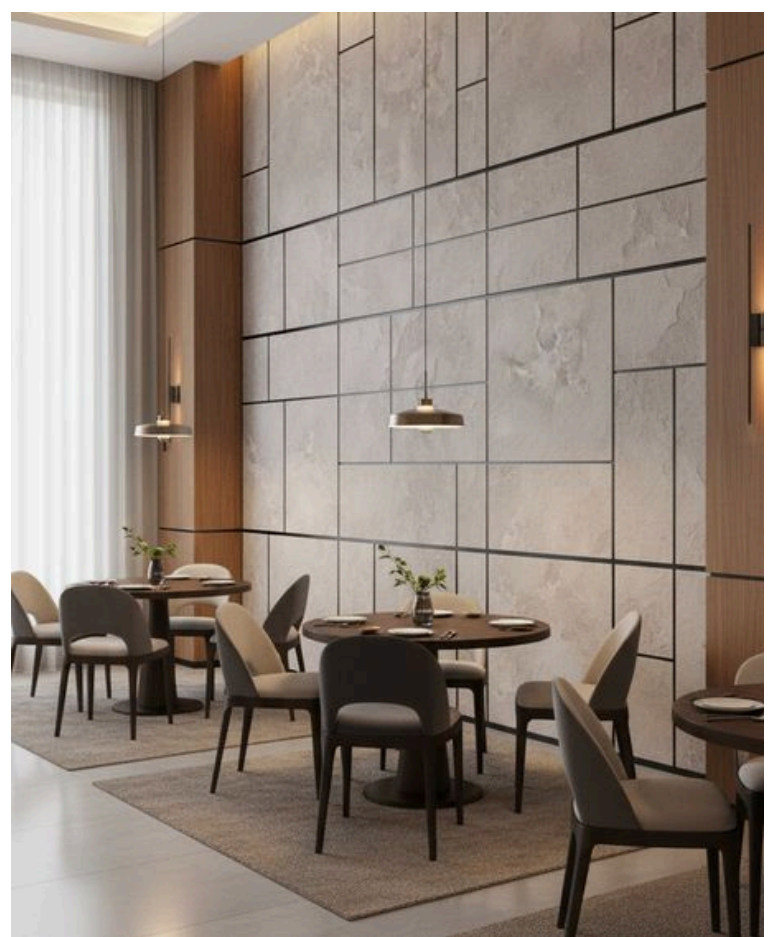
Office Wall Panelling



Ceiling Panelling



Display Wall Panelling



Restaurant Feature Wall Panelling

MATCH PANEL is a versatile solution for modern homes, offering a sleek and seamless look across various interior elements. It creates an elegant TV feature wall, delivers a premium finish for shoes cabinet doors and wardrobe doors, and enhances any space through stylish wall panelling. With its lightweight design, extended size, and refined aesthetic, MATCH PANEL brings a contemporary, durable, and cohesive finish to residential interiors.



MATCH PANEL™

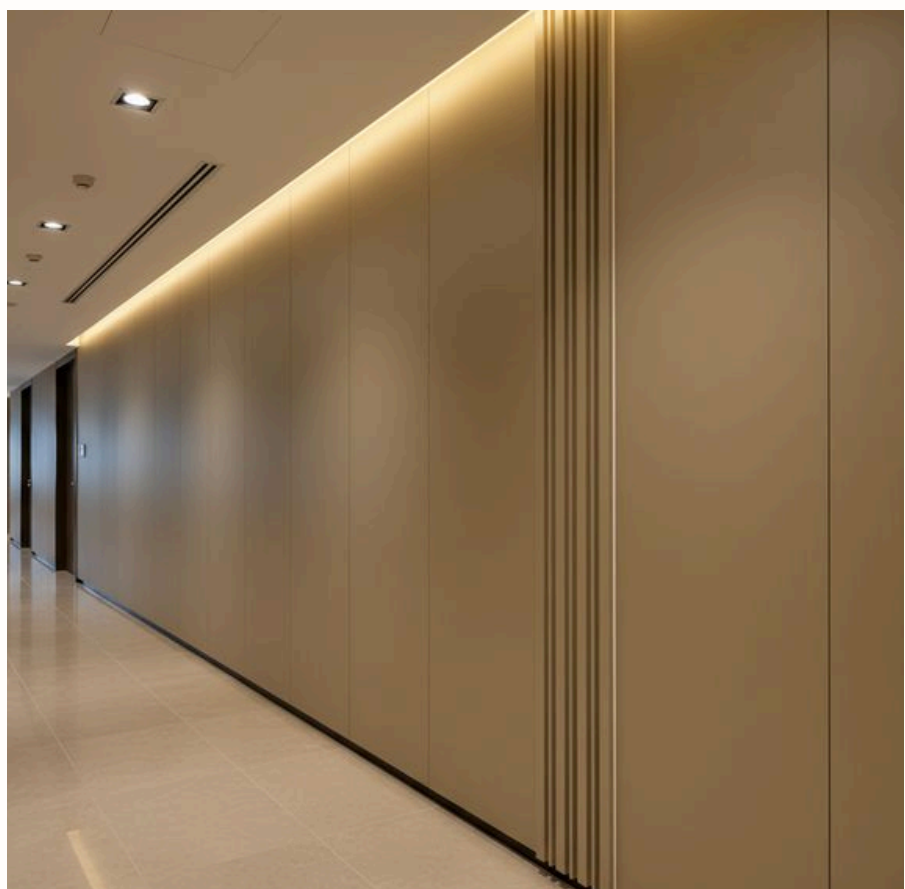
CERTIFIED GREEN PRODUCT



Custom-Made MATCH Panel for Commercial Projects

MATCH Panels can be fully customised with selected melamine finishes, made-to-order sizes, and groove line patterns tailored to any design concept. This flexibility allows architects and designers to create unique, branded, and visually striking feature walls perfectly suited for commercial interiors.

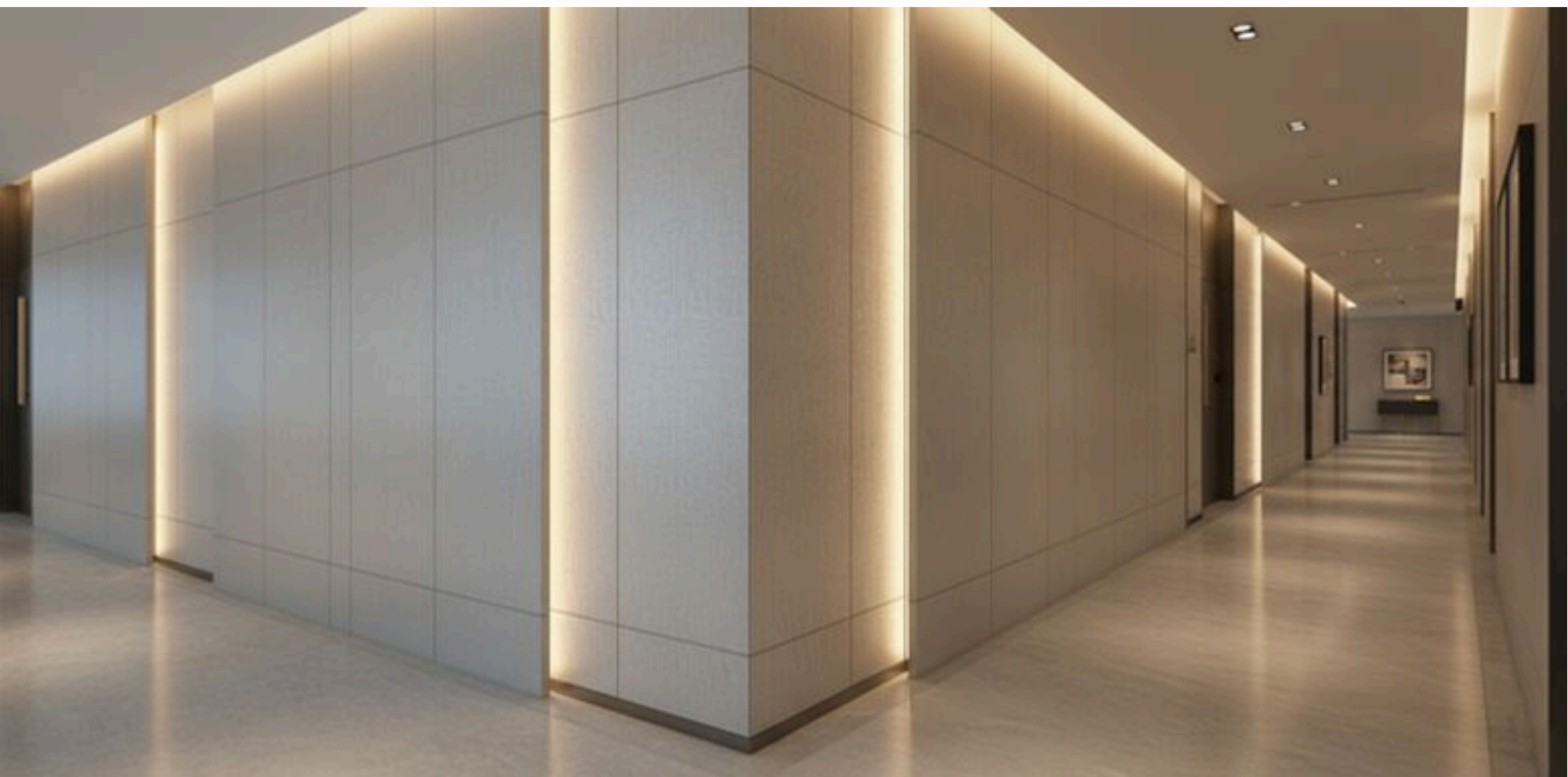
Contact our sales team for more details on customisation options and to explore how our Match Panels can elevate your next project.





MATCH PANEL™

CERTIFIED GREEN PRODUCT





MATCH PANEL™

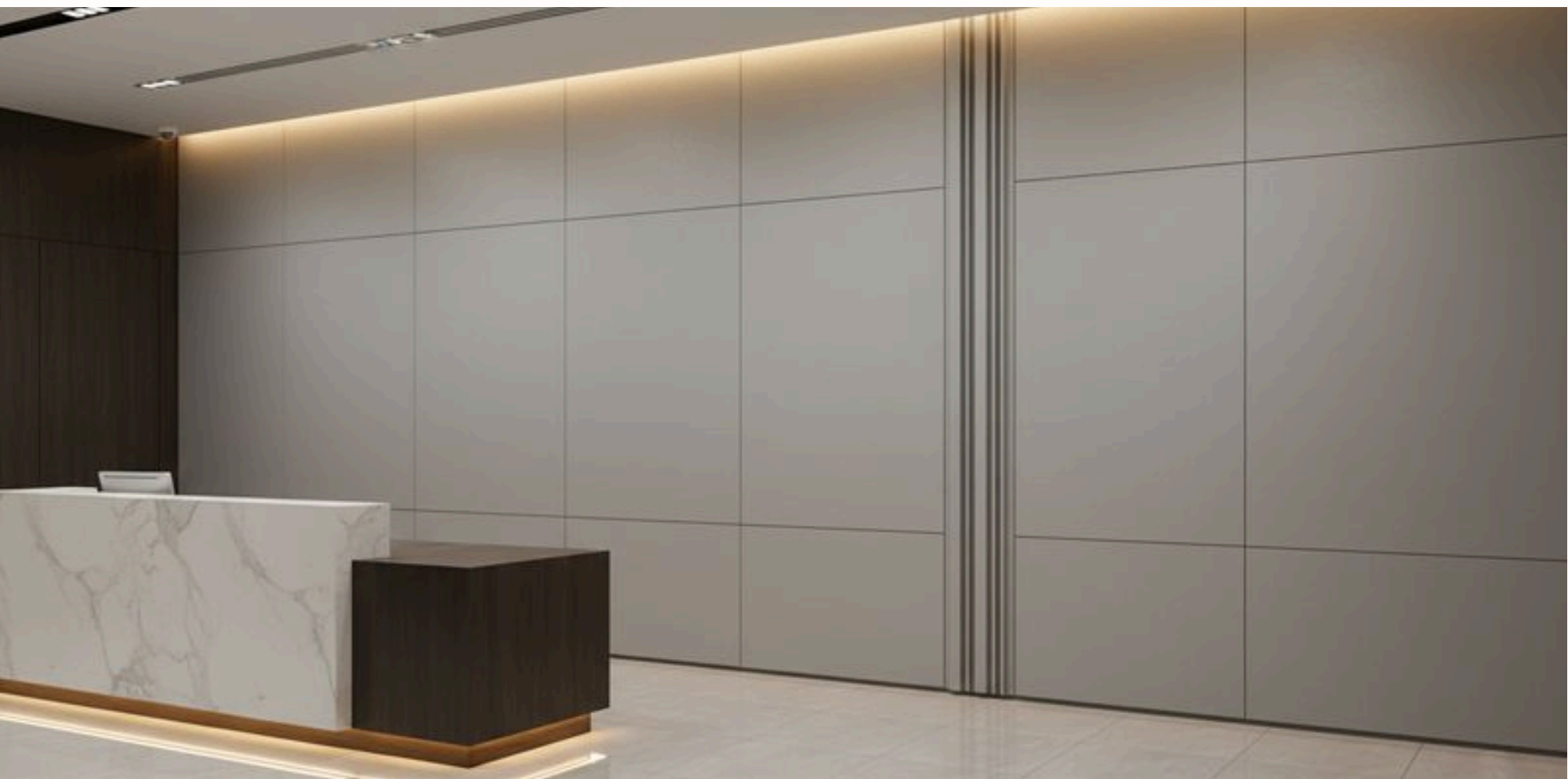
CERTIFIED GREEN PRODUCT





MATCH PANEL™

CERTIFIED GREEN PRODUCT





MATCH PANEL™

CERTIFIED GREEN PRODUCT





MATCH PANEL™

CERTIFIED GREEN PRODUCT

