



SOFT-STONE
COLLECTION



SOFT-STONE

100% REAL STONE

SOFT-STONE™

moisture resistant water resistant flame retardant machinability paintability usage suitability interior exterior wet area

SOFT-STONE™ cannot be guaranteed to match panel to panel, so it is recommended that orders take into account of future maintenance or re-fit possibilities. Since this product is made of natural stone, color, texture and grain variances are not defects within the material and no two sheets are exactly the same.



Model No : ST-01/ ST-01B

Panel Materials : 100% Real stone

Manufacturing Method : Machine Cutting

Dimension ST-01 : 610mm X 1220mm X 2mm

Dimension ST-01B : 1200mm X 2400mm X 2mm

Surface Finish : Raw



SOFT-STONE

100% REAL STONE

SOFT-STONE™

moisture resistant water resistant flame retardant machinability paintability usage suitability interior exterior wet area

SOFT-STONE™ cannot be guaranteed to match panel to panel, so it is recommended that orders take into account of future maintenance or re-fit possibilities. Since this product is made of natural stone, color, texture and grain variances are not defects within the material and no two sheets are exactly the same.



Model No : ST-02/ ST-02B

Panel Materials : 100% Real stone

Manufacturing Method : Machine Cutting

Dimension ST-02 : 610mm X 1220mm X 2mm

Dimension ST-02B : 1200mm X 2400mm X 2mm

Surface Finish : Raw



SOFT-STONE

100% REAL STONE

SOFT-STONE™

moisture resistant water resistant flame retardant machinability paintability usage suitability interior exterior wet area

SOFT-STONE™ cannot be guaranteed to match panel to panel, so it is recommended that orders take into account of future maintenance or re-fit possibilities. Since this product is made of natural stone, color, texture and grain variances are not defects within the material and no two sheets are exactly the same.



Model No : ST-04/ ST-04B

Panel Materials : 100% Real stone

Manufacturing Method : Machine Cutting

Dimension ST-04 : 610mm X 1220mm X 2mm

Dimension ST-04B : 1200mm X 2400mm X 2mm

Surface Finish : Raw



SOFT-STONE

100% REAL STONE

SOFT-STONE™

moisture resistant water resistant flame retardant machinability paintability usage suitability interior exterior wet area

SOFT-STONE™ cannot be guaranteed to match panel to panel, so it is recommended that orders take into account of future maintenance or re-fit possibilities. Since this product is made of natural stone, color, texture and grain variances are not defects within the material and no two sheets are exactly the same.



For bookmatched pattern need to purchase left and right

Model No : ST-10/ ST-10B

Panel Materials : 100% Real stone

Manufacturing Method : Machine Cutting

Dimension ST-10 : 610mm X 1220mm X 2mm

Dimension ST-10B : 1200mm X 2400mm X 2mm

Surface Finish : Raw



SOFT-STONE

100% REAL STONE

SOFT-STONE™

moisture resistant water resistant flame retardant machinability paintability usage suitability interior exterior wet area

SOFT-STONE™ cannot be guaranteed to match panel to panel, so it is recommended that orders take into account of future maintenance or re-fit possibilities. Since this product is made of natural stone, color, texture and grain variances are not defects within the material and no two sheets are exactly the same.



Model No : ST-14/ ST-14B

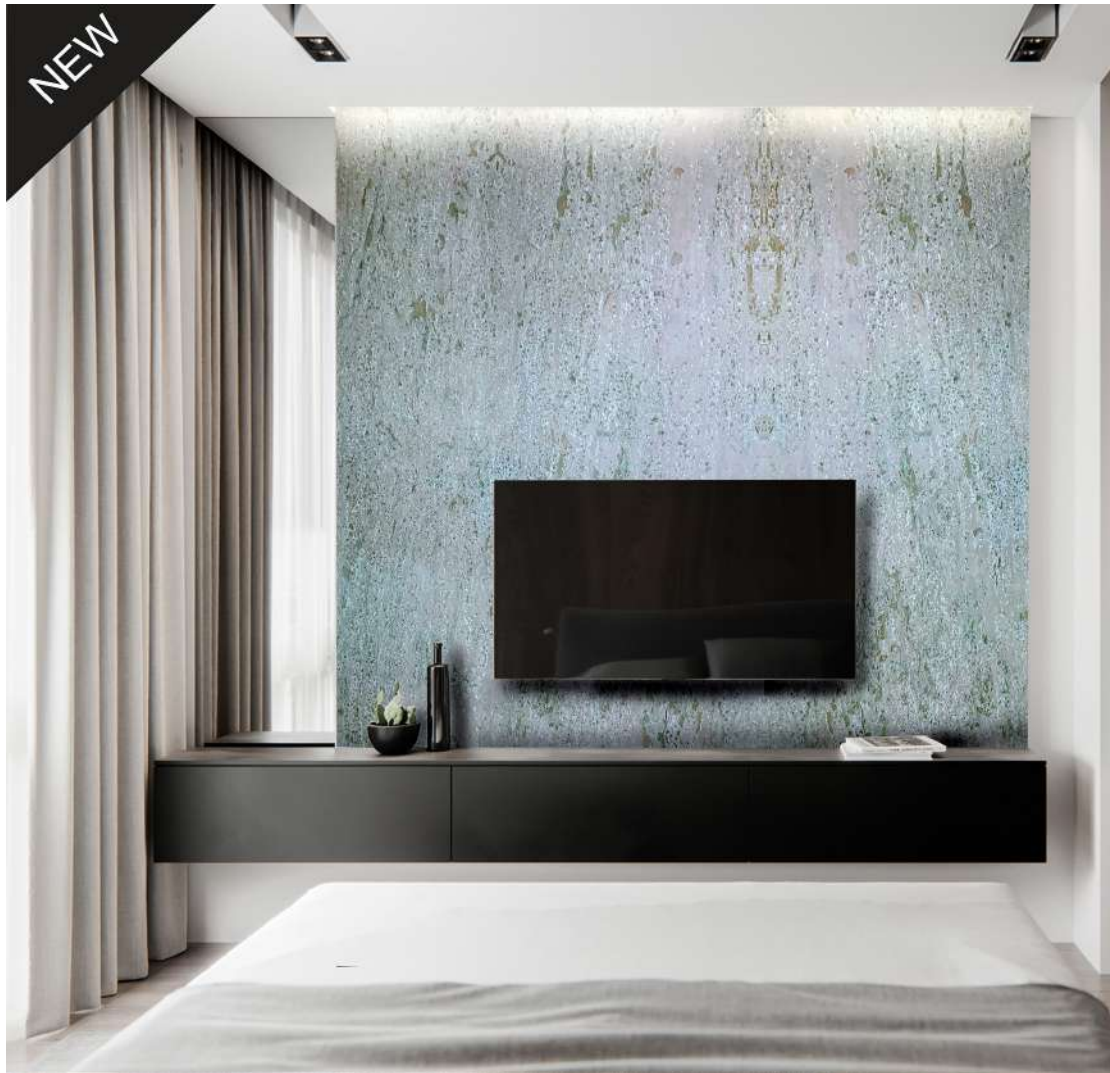
Panel Materials : 100% Real stone

Manufacturing Method : Machine Cutting

Dimension ST-14 : 610mm X 1220mm X 2mm

Dimension ST-14B : 1200mm X 2400mm X 2mm

Surface Finish : Raw



SOFT-STONE

100% REAL STONE

SOFT-STONE™

moisture resistant water resistant flame retardant machinability paintability usage suitability interior exterior wet area

SOFT-STONE™ cannot be guaranteed to match panel to panel, so it is recommended that orders take into account of future maintenance or re-fit possibilities. Since this product is made of natural stone, color, texture and grain variances are not defects within the material and no two sheets are exactly the same.



Model No : ST-16B

Panel Materials : 100% Real stone

Manufacturing Method : Machine Cutting

Dimension ST-16B : 1200mm X 2400mm X 2mm

Surface Finish : Raw



SOFT-STONE

100% REAL STONE

SOFT-STONE™

moisture resistant water resistant flame retardant machinability paintability usage suitability interior exterior wet area

SOFT-STONE™ cannot be guaranteed to match panel to panel, so it is recommended that orders take into account of future maintenance or re-fit possibilities. Since this product is made of natural stone, color, texture and grain variances are not defects within the material and no two sheets are exactly the same.



Model No : ST-17B

Panel Materials : 100% Real stone

Manufacturing Method : Machine Cutting

Dimension ST-17B : 1200mm X 2400mm X 2mm

Surface Finish : Raw



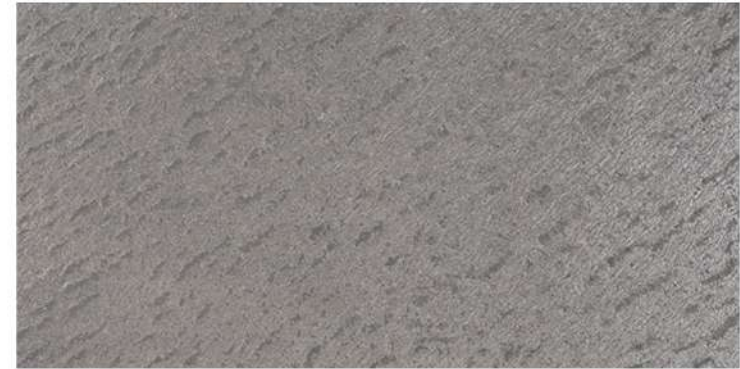
SOFT-STONE

100% REAL STONE

SOFT-STONE™

moisture resistant water resistant flame retardant machinability paintability usage suitability interior exterior wet area

SOFT-STONE™ cannot be guaranteed to match panel to panel, so it is recommended that orders take into account of future maintenance or re-fit possibilities. Since this product is made of natural stone, color, texture and grain variances are not defects within the material and no two sheets are exactly the same.



Model No : ST-21 / ST-21B

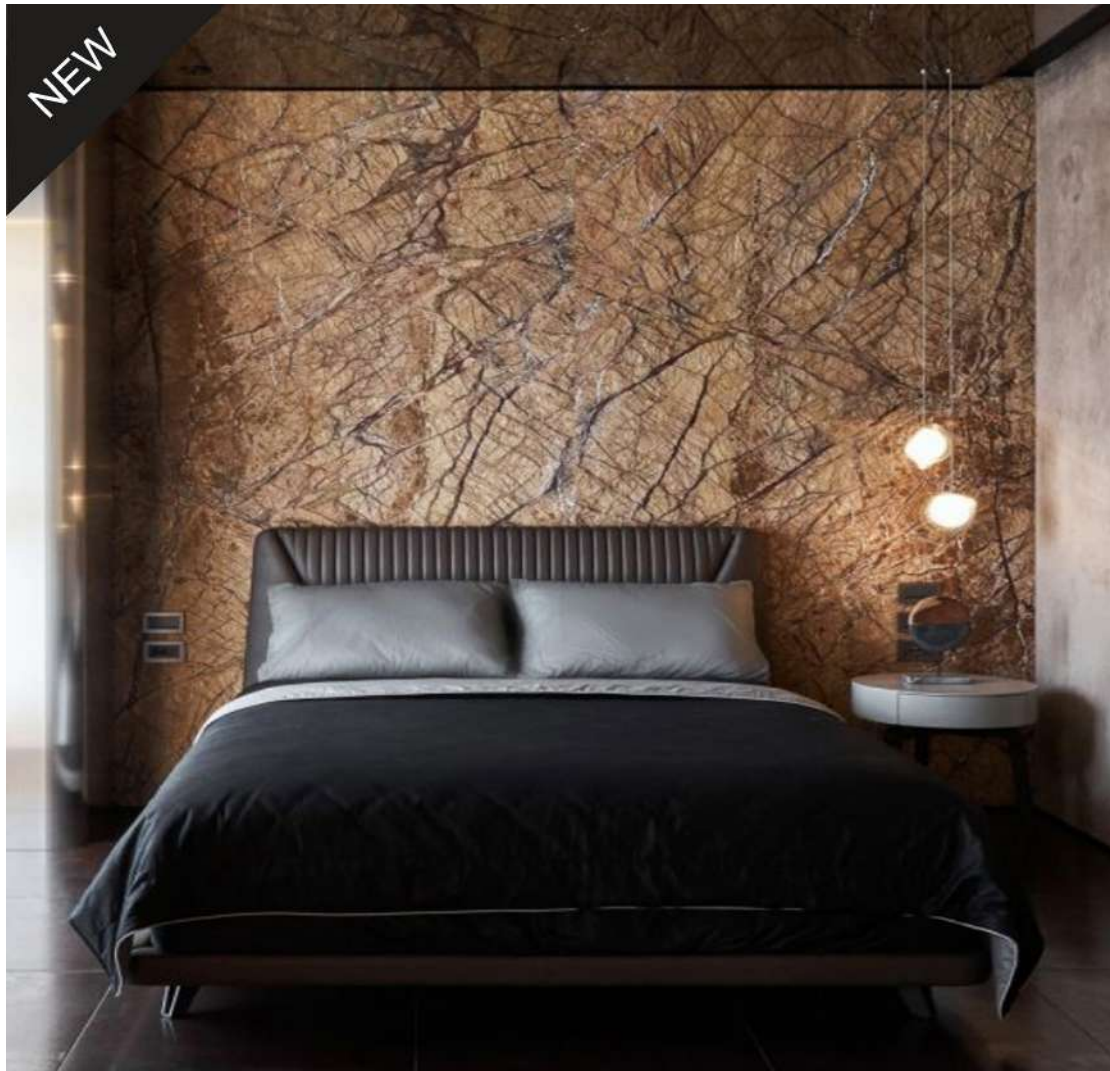
Panel Materials : 100% Real stone

Manufacturing Method : Machine Cutting

Dimension ST-21 : 610mm X 1220mm X 2mm

Dimension ST-21B : 1200mm X 2400mm X 2mm

Surface Finish : Raw



SOFT-STONE

100% REAL STONE

SOFT-STONE™

moisture resistant water resistant flame retardant machinability paintability usage suitability interior exterior wet area

SOFT-STONE™ cannot be guaranteed to match panel to panel, so it is recommended that orders take into account of future maintenance or re-fit possibilities. Since this product is made of natural stone, color, texture and grain variances are not defects within the material and no two sheets are exactly the same.



Model No : ST-41/ ST-41B

Panel Materials : 100% Real stone

Manufacturing Method : Machine Cutting

Dimension ST-41 : 610mm X 1220mm X 2mm

Dimension ST-421 : 1200mm X 2400mm X 2mm

Surface Finish : Raw



SOFT-STONE

100% REAL STONE

SOFT-STONE™

moisture resistant water resistant flame retardant machinability paintability usage suitability interior exterior wet area

SOFT-STONE™ cannot be guaranteed to match panel to panel, so it is recommended that orders take into account of future maintenance or re-fit possibilities. Since this product is made of natural stone, color, texture and grain variances are not defects within the material and no two sheets are exactly the same.



Model No : ST-42/ ST-42B

Panel Materials : 100% Real stone

Manufacturing Method : Machine Cutting

Dimension ST-42 : 610mm X 1220mm X 2mm

Dimension ST-42B : 1200mm X 2400mm X 2mm

Surface Finish : Raw



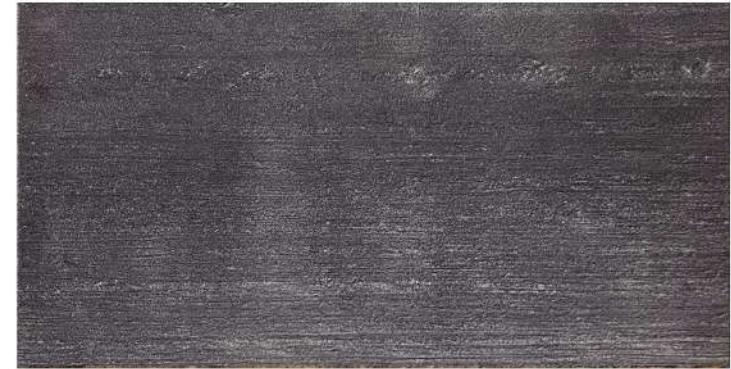
SOFT-STONE

100% REAL STONE

SOFT-STONE™

moisture resistant water resistant flame retardant machinability paintability usage suitability interior exterior wet area

SOFT-STONE™ cannot be guaranteed to match panel to panel, so it is recommended that orders take into account of future maintenance or re-fit possibilities. Since this product is made of natural stone, color, texture and grain variances are not defects within the material and no two sheets are exactly the same.



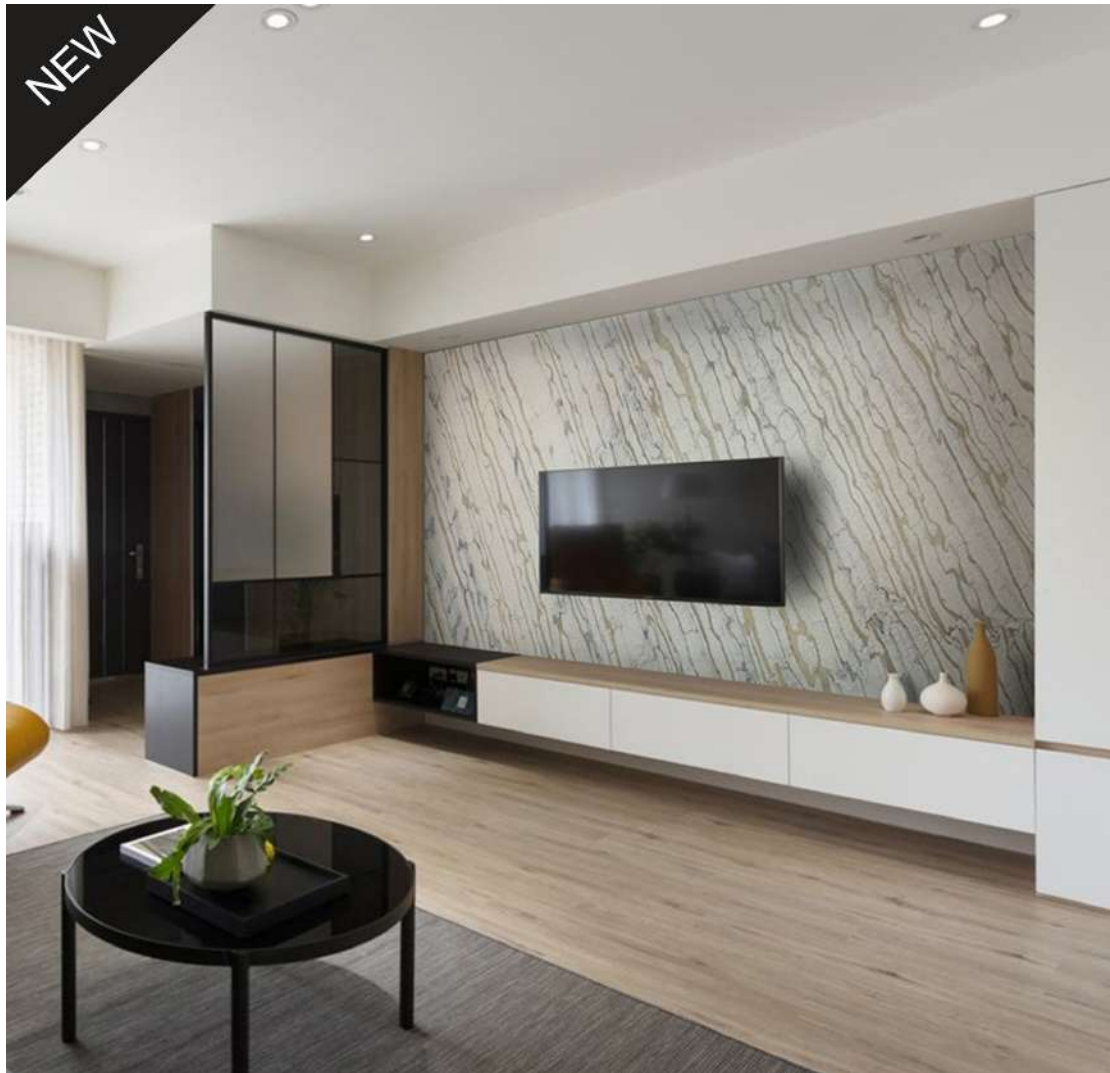
Model No : ST-43B

Panel Materials : 100% Real stone

Manufacturing Method : Machine Cutting

Dimension ST-43B : 1200mm X 2400mm X 2mm

Surface Finish : Raw



SOFT-STONE

100% REAL STONE

SOFT-STONE™

moisture resistant water resistant flame retardant machinability paintability usage suitability interior exterior wet area

SOFT-STONE™ cannot be guaranteed to match panel to panel, so it is recommended that orders take into account of future maintenance or re-fit possibilities. Since this product is made of natural stone, color, texture and grain variances are not defects within the material and no two sheets are exactly the same.



Model No : ST-44B

Panel Materials : 100% Real stone

Manufacturing Method : Machine Cutting

Dimension ST-44B : 1200mm X 2400mm X 2mm

Surface Finish : Raw